

WestInvest 'Have Your Say' Summary Report

Prepared by the WestInvest Program Office

April 2022



Premier
& Cabinet

Contents

1. About WestInvest	3
2. About the WestInvest ‘Have Your Say’ Summary Report	4
3. ‘Have Your Say’ Quick Statistics	5
4. Summary of ‘Have Your Say’ Survey	5
5. Eligible Responses Per Local Government Area	7
6. Local Government Area Summary	7
Annexure A – Blacktown Summary	10
Annexure B – Blue Mountains	13
Annexure C – Burwood	15
Annexure D – Camden	17
Annexure E – Campbelltown	19
Annexure F – Canterbury-Bankstown	21
Annexure G – Cumberland	23
Annexure H – Fairfield	24
Annexure I – Hawkesbury	25
Annexure J – Liverpool	27
Annexure K – Parramatta	29
Annexure L – Penrith	31
Annexure M – Strathfield	33
Annexure N – The Hills	34
Annexure O – Wollondilly	36

1. About WestInvest

The NSW Government is delivering WestInvest to secure a brighter future for Western Sydney families and residents by helping to build new and improved facilities and local infrastructure that enhance liveability.

The \$5 billion program will fund transformational infrastructure projects across Western Sydney, one of the most diverse and dynamic economic centres in the nation. The projects will improve community amenity and economic recovery, making a real difference to life in the below 15 Local Government Areas.



WestInvest funding will be directed towards projects that improve outcomes in one or more of the six focus areas:



Quality green and open spaces:



Community infrastructure:



School modernisation:



Arts and cultural facilities:



High street activation:



Local traffic programs:

WestInvest will provide local communities with projects such as the revitalisation of high streets, improved parks, new sporting fields, indoor sporting facilities, swimming pools, better local traffic flow and active transport links.

The **\$5 billion WestInvest Program** is broken down by:

- **\$3 billion** for NSW Government agencies to deliver transformational projects.
- **\$2 billion** for Community Project Grants:
 - Local Government Allocation: \$400m to local councils - between \$20 million and \$35 million, depending on population
 - Competitive Round: \$1.6 billion to community groups through a competitive round.

2. About the WestInvest ‘Have Your Say’ Summary Report

On 23 February 2022, Premier Dominic Perrottet, Treasurer Matt Kean and Minister for Western Sydney Stuart Ayres called for Western Sydney residents to put forward ideas for community enhancing projects ahead of the official WestInvest Program launch.

Residents were invited to submit ideas through a ‘Have Your Say’ survey on the NSW Government website between 23 February 2022 and 31 March 2022. The purpose of the survey was to capture ideas and gain feedback from Western Sydney residents about the infrastructure projects that would improve their local communities. More than 5,400 people submitted a survey, with 11,336 ideas generated.

The WestInvest Program Office has undertaken an analysis of the feedback and ideas presented in the surveys against the WestInvest Program Guidelines.

Community members provided diverse suggestions, ranging from indoor sports facilities, tree planting, swimming pools and multicultural food precincts, to boat ramps and playgrounds. An overview of eligible community suggestions broken down by LGA is provided in Annexures A – O.

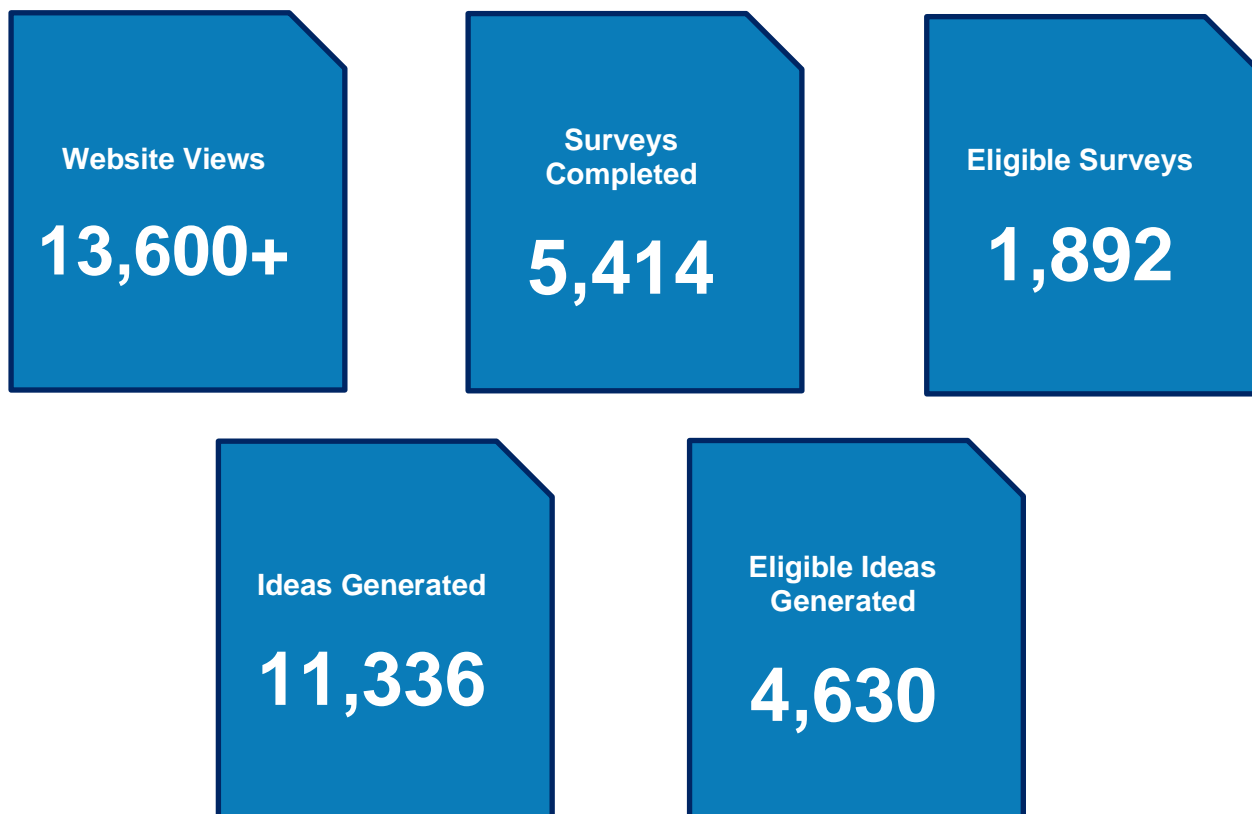
While some ideas put forward through the ‘Have Your Say’ survey did not meet the WestInvest Guidelines, they provide an insight into the projects that are important to local residents. This information will be collated and shared with the relevant local councils and NSW Government agencies to help inform future planning in Western Sydney. The ideas deemed ineligible for WestInvest are not included in this report.

This WestInvest ‘Have Your Say’ Summary Report provides a breakdown of the most popular focus areas overall, per Local Government Area (LGA), and lists the eligible ideas that were captured. The information from those eligible surveys will feed into the assessment process across the WestInvest Program.

Surveys and ideas put forward through the ‘Have your Say’ process were for consultation purposes only and do not form part of a formal application under the WestInvest Program. Information about how to register interest and apply for the WestInvest Program is available at www.nsw.gov.au/westinvest.

“An indoor sports centre would transform our community”

3. ‘Have Your Say’ Quick Statistics



4. Summary of ‘Have Your Say’ Survey

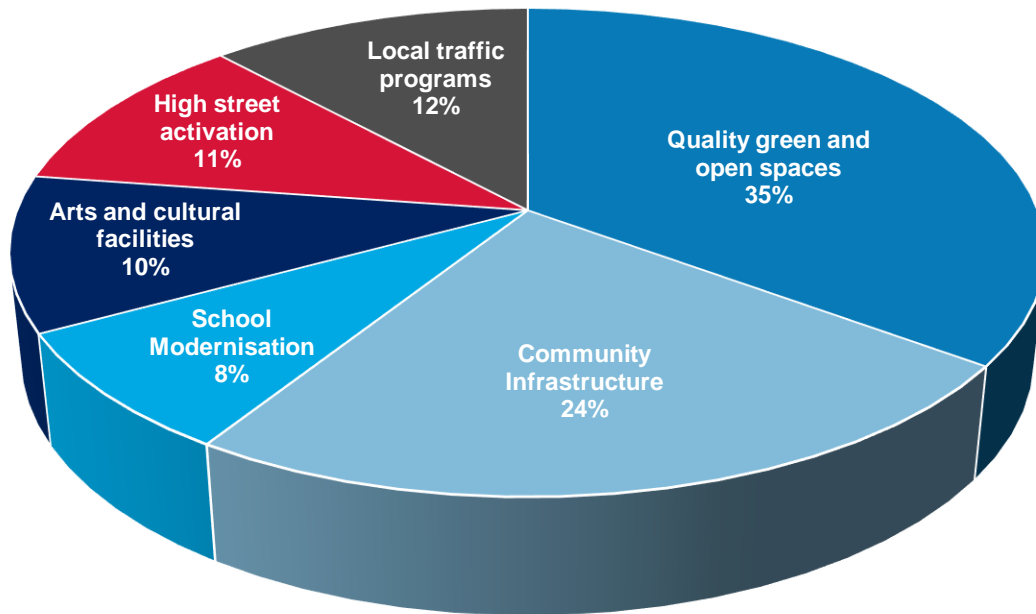
The ‘Have Your Say’ survey provided an opportunity for Western Sydney residents to put forward ideas for projects that would improve and enhance the communities in which they live.

Those that completed the survey were asked to answer four questions:

1. What LGA does your idea relate to?
2. Which of the six WestInvest focus areas does your idea relate to?
 - i. Quality green and open spaces;
 - ii. Community infrastructure;
 - iii. School modernisation;
 - iv. Arts and cultural facilities;
 - v. High streets activation; and
 - vi. Local traffic programs.
3. What transformational infrastructure project would improve liveability in your local area?
4. Describe how this project would be transformational to your local community now and into the future.

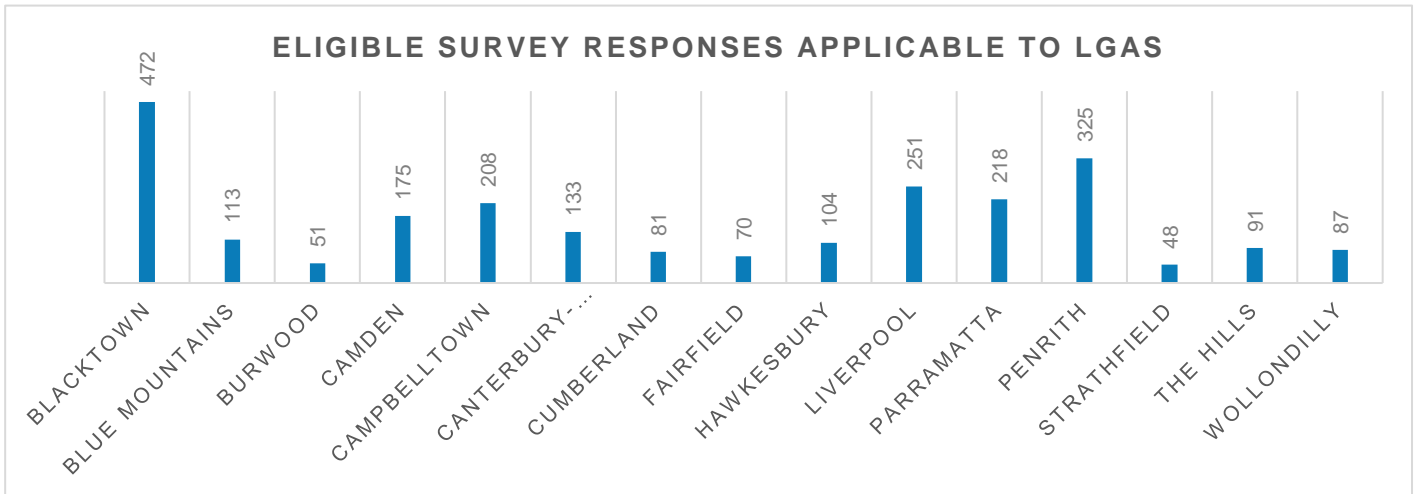
A breakdown of all eligible ‘Have Your Say’ survey responses have been filtered into one or more of the six focus areas for the WestInvest program. The outcomes are captured in the chart below:

Overall Eligible Responses



“A multipurpose community facility will provide a space for community, cultural, recreational and social building events, transforming the community that currently reside here...”

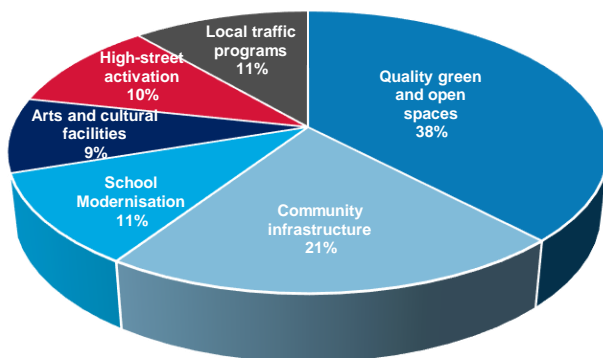
5. Eligible Responses Per Local Government Area



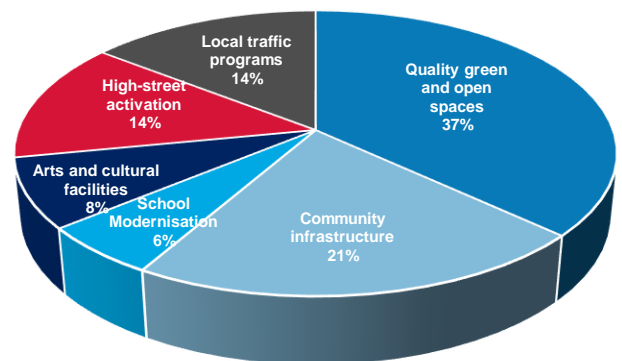
6. Local Government Area Summary

A breakdown of eligible survey responses by each Local Government Area is provided below.

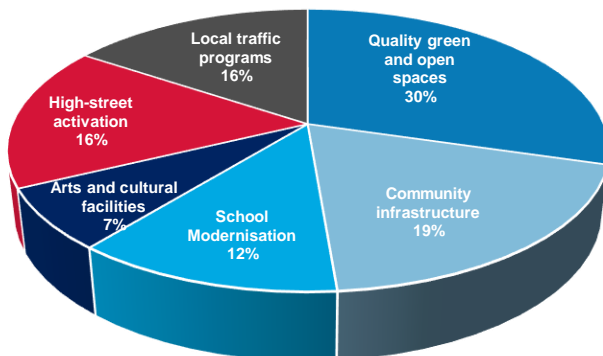
BLACKTOWN



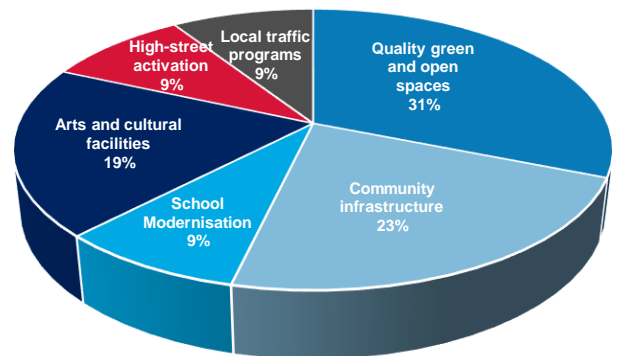
BLUE MOUNTAINS



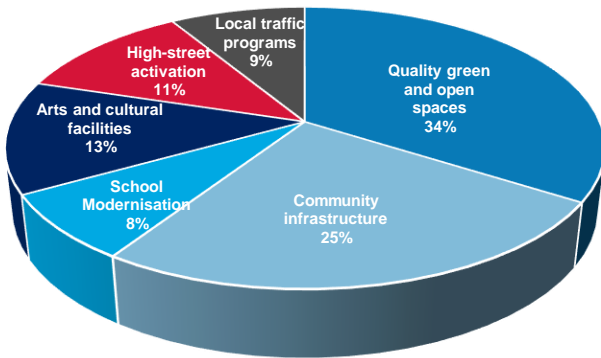
BURWOOD



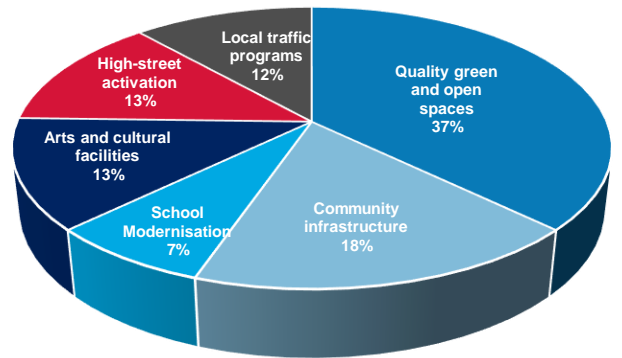
CAMDEN



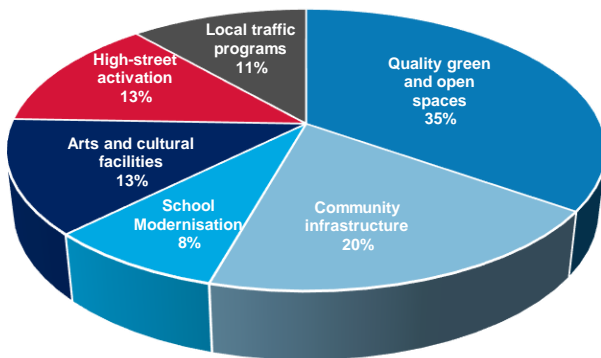
CAMPBELLTOWN



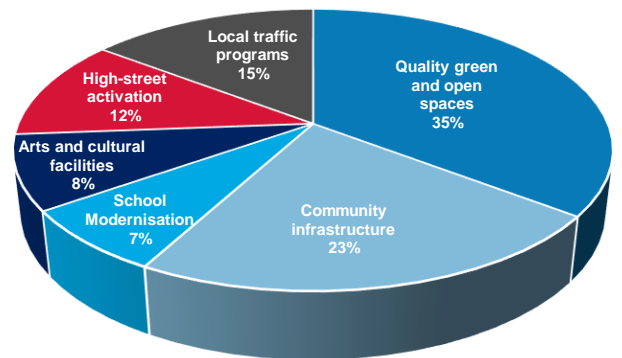
CANTERBURY-BANKSTOWN



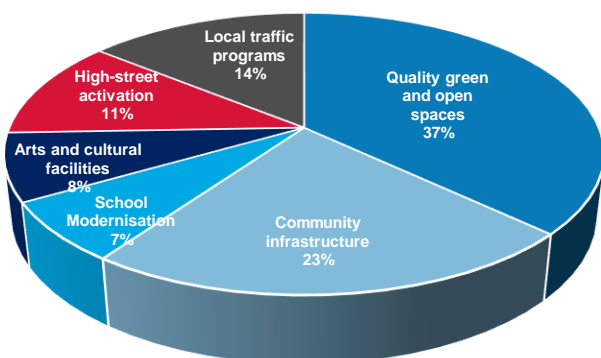
CUMBERLAND



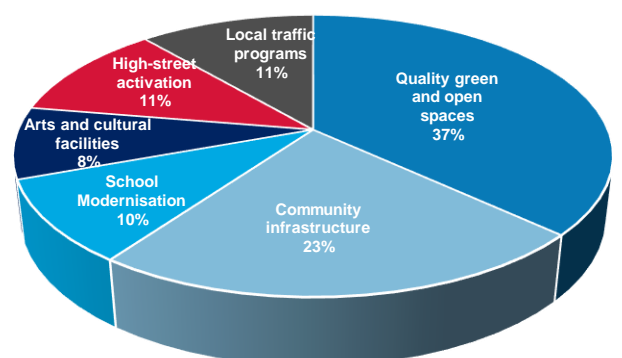
FAIRFIELD



HAWKESBURY

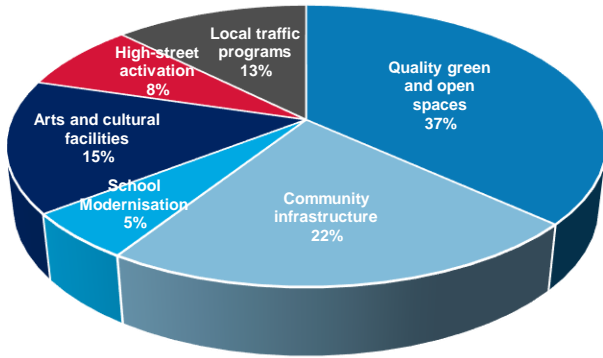


LIVERPOOL

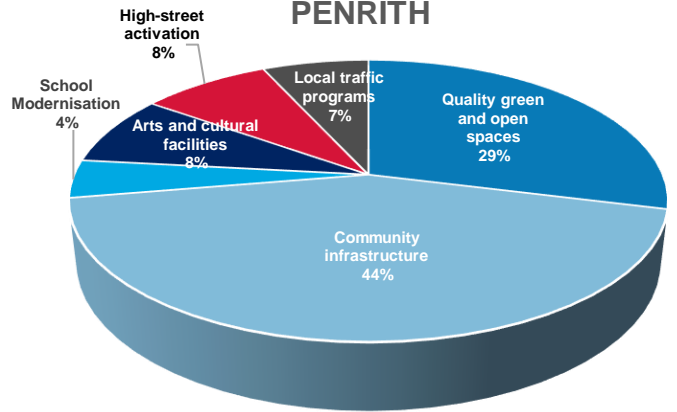


“I’d love to see more combined bike and pedestrian paths for our family to use”

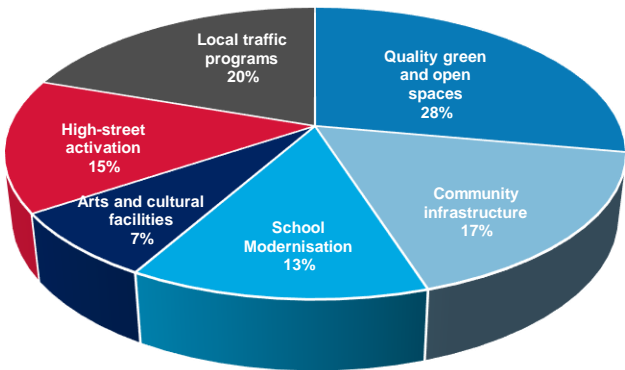
PARRAMATTA



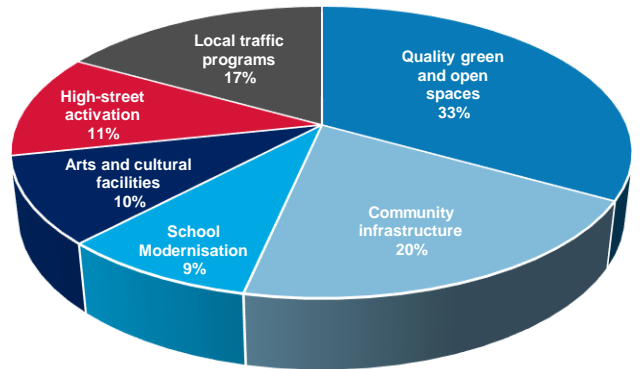
PENRITH



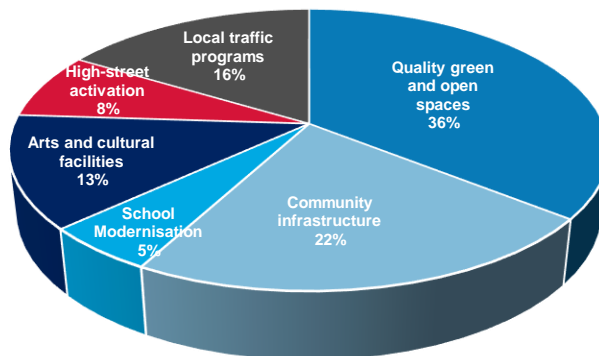
STRATHFIELD



THE HILLS



WOLLONDILLY



“Walking and cycle paths along our rivers”

Annexure A – Blacktown Summary

Note – This is a summary list of eligible WestInvest ideas

What transformational infrastructure project would improve liveability in your local area?
New parks and recreational facilities
Blacktown Main Street revamp
A proper public innovation hub is required in the Western Sydney area
A performance BMX track for the kids
A multicultural centre/structure with facilities and staff qualified to assist local population to enhance exchange of skills and encourage home-based industries
Outdoor water lagoon
Really great museums (children's, science, natural history etc)
A conservatorium of music
Clean out creeks and drainage channels
Community infrastructure and arts, crafts and cultural events, course, facilities, and community outlets
Exercise facilities for seniors in the parks
Local swimming pools
More natural green space with mature trees, native vegetation and a community garden where people can grow produce

WestInvest – ‘Have Your Say’ Summary Report

Local library at Marsden Park
Museums/shopping centres/ swimming pools / entertainment facilities
More cycling tracks and extend existing cycling tracks
Shade and protective gates for a children’s play area
More updated, sheltered playgrounds with picnic and BBQ facilities
Indoor sports facilities such as basketball courts
Create more fusion spaces, where parks and cafes, along with play equipment are located. It would be brilliant to have more 'local' places to meet
More green parks along the natural rivers/streams
Shade sails/structures/facilities in all parks that don’t have existing natural shade
Creating more community arts and cultural facilities would be beneficial. Centres which allow families to learn more about the Australian culture, lifestyle and help make friends
Hockey fields
Creation of a bicycle commuter facility so cyclists can commute into the Blacktown CBD and have end of trip facilities to enable their transition to their workplace
Adding more trees
Improved high streets that value history and architecture
Parks with restaurants and seating spaces for picnics and activities for teenagers also (not just young kids). Fun spaces like a trampoline park with food stalls
Splash parks, and young children play spaces

WestInvest – ‘Have Your Say’ Summary Report

A modern swimming pool with outdoor picnic and a play area

Communal gardening in green spaces, in particular food forests. Landscaping to capture water runoff for growing. Showcase indigenous land management concepts

Netball courts

More parks, cycling tracks and walkways

Mitigate urban heat island effect by creating green corridors in developing suburbs and creating urban forestry areas in existing suburbs

Annexure B – Blue Mountains

Note – This is a summary list of eligible WestInvest ideas

What transformational infrastructure project would improve liveability in your local area?
Covered area parks and picnic grounds, especially with new toilet facilities opened longer
Shared bike and footpaths off the highway linking mountains towns
Planting more trees and flowers in major streets
More dedicated cycle paths
Mountain bike tracks and facilities
Outdoor exercise stations with fixed equipment
Hazelbrook shops turned into a piazza
More green spaces and community gathering buildings to house more social support in the form of socially educated people
Upgraded community centres
An inclusive, all ages park in the mid-mountains
Pedestrian access for fragmented communities in the Blue Mountains
Larger pool updates and outdoor parks with water play
Waterplay playground for all ages

WestInvest – ‘Have Your Say’ Summary Report

Wide-reaching Safe Routes to School programs that ensures safe, comfortable and convenient walking and cycling routes and facilities for children, parents and teachers
Wentworth Falls Lake needs a path constructed which goes all the way around
More services, social activities, parks etc
Play spaces in Knapsack Reserve, including water play and better access from surrounding streets including footpaths
Completing a safe active transport corridor through the Blue Mountains
A cycleway across the Blue Mountains
An Aboriginal parkland
Indoor youth activity centre for sports and rock climbing indoors in Blue Mountains
A play space/water space for summer and improved indoor spaces/sport areas and wet weather activities for teens in the mid mountains
Infrastructure to expand and improve creative arts in the Blue Mountains to attract more local artists and create a significant art hub for the community
Fitness parks for adults
The restoration of the former Mount St Mary's Convent and College into a cultural and events centre

Annexure C – Burwood

Note – This is a summary list of eligible WestInvest ideas

What transformational infrastructure project would improve liveability in your local area?
More green spaces, tree canopy to reduce effects of climate change
More separated cycleways
Trees. Trees. Trees. Trees
Walkable streets
Mature tree shade
More green spaces and community gathering buildings
Cleaner and more orderly high streets with classier shopfronts and non-slip foot paths; more green space and vegetation
Bicycle paths that run alongside main roads, but are separated from motor traffic
More street trees
Change Burwood Road to bus and delivery only. Upgrade the streetscape to be people friendly
More walkable open parks
High rise sporting complexes
Provide greater access and recreational facilities for people with disabilities

WestInvest – ‘Have Your Say’ Summary Report

New full size all weather playing field next to Enfield pool

There are so many young families in desperate need of green open spaces for kids to play and explore in

The creation of a dedicated community services hub through the purchase of a building and/or land in the heart of the Burwood town centre to enable people to access a broad range of critical social services

Annexure D – Camden

Note – This is a summary list of eligible WestInvest ideas

What transformational infrastructure project would improve liveability in your local area?
Sporting fields for Spring Farm
More indoor sports facilities and fitness centres
More areas to accommodate motorsports
Update and revitalise older parks
Connecting a green bike and walking nature trail down from the botanic gardens to Queen Street, Campbelltown with art and different place for play
More separated cycle ways
A local leisure centre (indoor pool) for the Gregory Hills/Gledswood Hills area
Walking trails along Nepean River at Spring Farm
Youth facilities
Activated walking tracks into the town centre
Dance and arts centres
More easily accessible public space for horse riders
Creative and performing arts centre

WestInvest – ‘Have Your Say’ Summary Report

Public pool area
Liven up high streets around Camden Council area - vibrant eat streets, street art murals and music
Wave pool
A performance space accommodating cultural performances
Provision of bicycling paths
Restore historic buildings in Camden for community use, local cultural organisations, and heritage tourism
Provide funding for owners of historic and heritage listed properties to enable them to restore and maintain these places and open them to the community

Annexure E – Campbelltown

Note – This is a summary list of eligible WestInvest ideas

What transformational infrastructure project would improve liveability in your local area?
A park with equipment for kids and adults will help boost the overall liveability
Free sporting areas such as tennis courts and increased park areas
A dedicated community and youth centre
Campbelltown’s Queen Street revitalised
Provide bike tracks all around the city to help us enjoy the great outdoors, that leads us to our local jobs, or on weekends to explore the beautiful parklands and reserves in the area
Improvements to Ingleburn town centre
Footpaths that connect to walking tracks
Off-road cycleway from Glenfield to Campbelltown along the rail line - complete the Liverpool to Campbelltown rail trail
Bigger libraries
Updated parks for children to play
More street trees
Local parks with more appropriate playing equipment and better transport to the major community related areas
Redesigning Queen Street to turn it into an entertainment and eating precinct – Entertainment venues, restaurants, cafes, bars etc

WestInvest – ‘Have Your Say’ Summary Report

Build/upgrade swim centres and outdoor water play spaces
Mountain bike tracks through the Scenic Hills
Make more family oriented areas, like pedestrians walking areas next to road and playground in every 500m radius
Large theatres to cater for shows for dance schools concerts, competitions, local theatre groups and local schools and community groups
A community centre with multifunctional spaces. A performance venue that could host large scale events and then be utilised for smaller performances, or individual rooms alongside a main hall
Aboriginal cultural spaces
The creation of a pedestrian only space the length of Queen Street. Removal of cars will allow for cafes, outdoor dining, children’s play space, greenery, and artwork/sculptures to create a central meeting place for Campbelltown locals
Revamp Queen Street into a dining and family friendly area
More schools and educational facilities, more green spaces and parks for all ages. More shopping centres where you can do all shopping in one area
Parks and sporting facility and improved traffic would improve liveability
Recreational facilities for teenagers
Creating a STEM focused interactive park for the local school to foster the kids interest and love for STEM

Annexure F – Canterbury-Bankstown

Note – This is a summary list of eligible WestInvest ideas

What transformational infrastructure project would improve liveability in your local area?
Build an outdoor obstacle training /playground that enables both young and old to enjoy nature reserves
Investment in a Campsie community / music / arts facility
Parks and libraries
More/revitalised parks with interactive activities and picnic spaces that are disability friendly
More greenery, more life, more colour on our streets
More spaces to grow food for local community access and benefit
Creative centre for languages culture and art where community can come together and enjoy small scale events
A world-class children’s museum and library for the local community and beyond
Pedestrian-only zones, focus on sustainability and environment
More street trees
Modern community/conference centres
More playgrounds for kids, nice spaces for picnics with some man-made water features. A nice local play area for kids
Cultural facilities

WestInvest – ‘Have Your Say’ Summary Report

Youth facilities
More cycle routes
A vibrant library/gallery/museum cultural centre in the Roselands area
Better utilisation of green space around Georges River National Park including proper signage for bush walking tracks, BBQs, toilet facilities and a netted beach area for swimming
Environmental management of Cooks River
More separated cycle paths for commuting between all suburbs
A community plaza and garden adjacent to Roselands Shopping Centre

Annexure G – Cumberland

Note – This is a summary list of eligible WestInvest ideas

What transformational infrastructure project would improve liveability in your local area?
Better parks for kids to play
More separated cycle ways
Having more inclusive playgrounds and parks for older kids (BMX tracks, skatepark)
Cultural/educational hubs that are available 24/7
Community halls and areas for events, classes etc
Greystanes does not have any public exercise facilities, skate parks or water parks
Place making and public art in the Lidcombe town centre
The amenities building used by the community and sporting groups at Girraween Park is old and needs to be replaced. A new modern building with up to date facilities, including space for a community hall is required as the population increases
Indoor swimming pool
Indoor sporting facility in the middle of western Sydney that allows for everything from disability work to support for elite sporting athletes
A meeting place that reveals the history, art and culture of the area to connect place and people
Merrylands swimming centre

Annexure H – Fairfield

Note – This is a summary list of eligible WestInvest ideas

What transformational infrastructure project would improve liveability in your local area?
Increased green space, transport and walkability. Major green walking and cycle ways connecting major population and community centres to break way from the concrete and industrial character of the west
Better connectivity, interesting spaces and lively parks that are interactive and safe, helping people to connect and feel at ease
A man-made creek, with a viewing area
Develop our waterways into a "Darling Harbour" type precinct with lots of outdoor dining, convention centres, theatres and entertainment
Mature tree shade
More green spaces and community gathering buildings, more social support in the form of socially educated people
Places for the LGBTQI+ community including a community centre and hall/sporting ground to allow for a growing community
Shade Sails/structures/facilities in all parks that don't have existing natural shade
Upgrade main streets in Cabramatta, Fairfield and Carramar to improve the public domain and liveability
Green space and trees

Annexure I – Hawkesbury

Note – This is a summary list of eligible WestInvest ideas

What transformational infrastructure project would improve liveability in your local area?
A walking cycling track around Yarramundi reserve
Removing traffic from the main street of Richmond and allowing cafes and restaurants to spill over into the street and park
Dedicated bushwalking tracks that allow greater accessibility for the disabled
Separated cycle ways
Upgrade of Richmond town centre and main park
Dedicated bicycle track/road between Richmond and Penrith along Castlereagh Road
Upgrade of parks to provide walking paths, pump track, netball courts, parking and picnic areas
Development of a riverside walking loop like the Great River Walk
More green spaces and community gathering buildings
Parks and green spaces including cycleways
More safe bicycle paths for the Richmond area and Windsor/South Windsor
Walking/running/cycling tracks connecting suburbs over longer distances
A vibrant main town centre with outdoor eating and night time economy in Windsor and Richmond

Upgrade the Fernadell Park sports Complex, Pitt Town

A motorcycle/motocross facility for Western Sydney

Annexure J – Liverpool

Note – This is a summary list of eligible WestInvest ideas

What transformational infrastructure project would improve liveability in your local area?
A footbridge over Williams Creek between Holsworthy and Voyager Point
A new parkland on the site of the former sewage treatment plant at Voyager Point
A Western Sydney Museum of food and culture
Parks and gardens and increased green areas
More parks!!! More trees for shading and biodiversity! More cycleways!!!
Large parks for cycling, more swimming pools
Archery range
Community garden and farmer’s market
More parklands, like Centennial Park with play equipment for children and bike riding for children that is safe in a park environment
Resources for the LGBTQI+ community including a community centre and hall/sporting ground to allow for a growing community out west
Creating play and learn outdoor areas for children that are focused in the STEM areas
Arts and theatre centre or stadium that could be used for shows, concerts and other similar uses
Revitalising foreshore of the Georges River to make them accessible and connected

WestInvest – ‘Have Your Say’ Summary Report

More water play, parks and swimming pools
Walkways and cycleways
Paths along Georges River

Annexure K – Parramatta

Note – This is a summary list of eligible WestInvest ideas

What transformational infrastructure project would improve liveability in your local area?
More cycle lanes
Workable transport solutions to mitigate congestion on Victoria Road and the population growth from the Melrose Park development
Better walkways and bike paths towards and in the Parramatta CBD
Build more outdoor gym parks
Cleaning of Parramatta Park and River
A multipurpose arts centre
Create a car-free zone in between Smith Street and Marsden Road
Increase urban spaces along the Parramatta River - Places to eat, play and stay
More local parks with lots of walking footpaths
Transforming part of the Parramatta River to a community swimming area, with public toilets, change rooms and shade
Wentworthville Library redevelopment
A Western Sydney performing arts and cultural centre
Synthetic playing fields

WestInvest – ‘Have Your Say’ Summary Report

A live performance space/art hub
Many more trees and green spaces
A tool and equipment library
A bridge over duck creek at Wentworth point for pedestrians and cyclists
A raised pedestrian and cycle crossing of Bennelong Parkway to the south of Haslams Creek bridge

Annexure L – Penrith

Note – This is a summary list of eligible WestInvest ideas

What transformational infrastructure project would improve liveability in your local area?
Green belts along creeks and floodways. Greening provides great habitats for local wildlife, but also helps cool the area in the hot summers
State of the art sporting facilities aimed at children, teenagers and young adults
A waterpark
Make the Nepean River swimmable
Bike paths
More trees, more trees
Connecting the Penrith Lakes area with parks, walkways, recreational and kids playgrounds
More walking tracks and paths in green areas
A large indoor/outdoor aquatic centre
More shady trees in parks and water features
Revitalising St Marys’ Queen Street
BMX track and pump track facilities in Penrith
More walkable open parks

WestInvest – ‘Have Your Say’ Summary Report

Transforming the Cranebrook stormwater control green space
Local artist studios that have workshops, artist residencies and a small gallery space
More and better active transport infrastructure (walking and cycling), more trees and place-making
Indoor netball court
More indoor recreation facilities in the Penrith LGA for sports
We need a regional gallery in the Penrith CBD
Indoor netball facility at Jamison Park
I want to see bike lanes and greater pedestrian-only zones in Penrith
A creative arts college in western Sydney

Annexure M – Strathfield

Note – This is a summary list of eligible WestInvest ideas

What transformational infrastructure project would improve liveability in your local area?
Upgrade to the Strathfield Town Centre
More green spaces, tree canopy to reduce effects of climate change
More separated cycle ways
More parks, more green space, more tree corridors - link up the parks and streets
Install community gardens and parking strip gardens
A comprehensive cycling network that links with surrounding LGAs
Play and outdoor learning space
Playground and outdoor learning environments

Annexure N – The Hills

Note – This is a summary list of eligible WestInvest ideas

What transformational infrastructure project would improve liveability in your local area?
Climate resilient street trees
Upgrade parks and schools
Create a local theatre with more capacity to bigger events and concerts which schools can use for graduation, cultural events, presentations, concerts
Bike paths so more people can ride and improve their health and avoid cars and pollution for both short and long distances
An artificial beach
More combined bike and pedestrian paths for families to use with appropriate sign posting
Another skateboard/scooter park in the North Kellyville or Rouse Hill area
A university campus linked to one of the top universities in NSW
Swimming pool
Transform the old showground area to a public sporting and recreation parkland
A Western Sydney performing arts and cultural centre
More synthetic ovals for all sports in the community
A rock-climbing wall or set up outdoors

Create a mountain bike track

Shared cycling pedestrian path from Castle Hill to Wisemans Ferry, shared path from Castle Hill to Parramatta on Old Norther Road, shared path from Castle Hill Metro to Oakhill High School

Annexure O – Wollondilly

(Note – This is a summary list of eligible WestInvest ideas

What transformational infrastructure project would improve liveability in your local area?
Better playgrounds with teenager and child sections to engage all children and young people
A bike pathway connecting Camden, Razorback and Picton
A heritage museum at the old Queen Victoria Hospital in Thirlmere/Picton
A new multi-purpose community facility in Thirlmere
Inclusive play space for children with disabilities
More green spaces and community gathering buildings
Upgrade to Tahmoor sportsground and facilities
Indoor basketball courts
Safe walking and/or cycling areas
More parks, more green space, more tree corridors - link up the parks and streets
A BMX/skate park for teenagers
Hiking and biking tracks built into the Warragamba Dam catchment area